

DETALHE VIGA RESPALDO - VR01, VR07 (15X30)



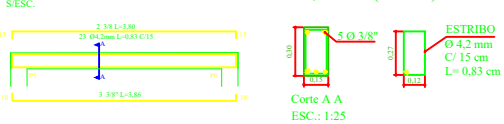
DETALHE VIGA RESPALDO - VR08, VR10, VR11 (15X30)



DETALHE VIGA RESPALDO - VR09 (15X30)



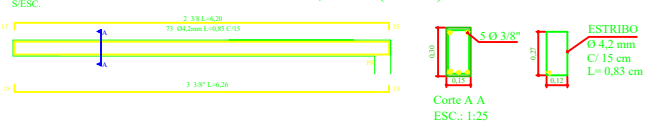
DETALHE VIGA RESPALDO - VR02, VR05 (15X30)



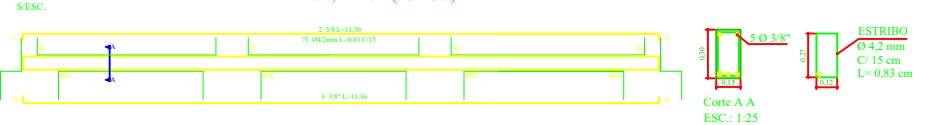
DETALHE VIGA RESPALDO - VR04 (15X30)



DETALHE VIGA RESPALDO - VR03, VR06 (15X30)



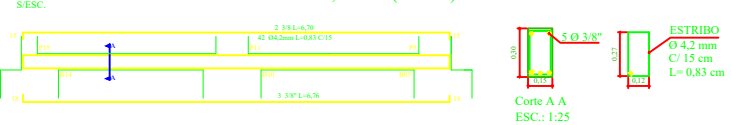
DETALHE VIGA BALDRAME - VB01, VB04 (15X30)



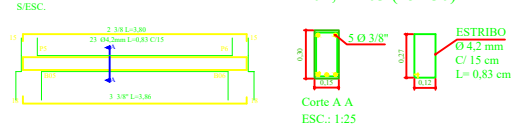
DETALHE VIGA BALDRAME - VB05, VB08 (15X30)



DETALHE VIGA BALDRAME - VB06, VB07 (15X30)



DETALHE VIGA BALDRAME - VB02, VB03 (15X30)



ASSUNTO:	PROJETO ESTRUTURAL	PRANCHA:	02/03
OBRA:	CONSTRUÇÃO DE PALCO E CAMARIM EM ALVENARIA NO CENTRO DE EVENTOS		
LOCAL:	CENTRO DE EVENTOS /PROLONGAMENTO DA RUA PALMEIRA PR - 160 - NOVA FÁTIMA - PARANÁ		
PROP.:	PREFEITURA MUNICIPAL DE NOVA FÁTIMA - PR		
	PREFEITO MUNICIPAL NILSON XAVIER PROJENISTA	RESP. TÉCNICO	ESCALA: INDICADA